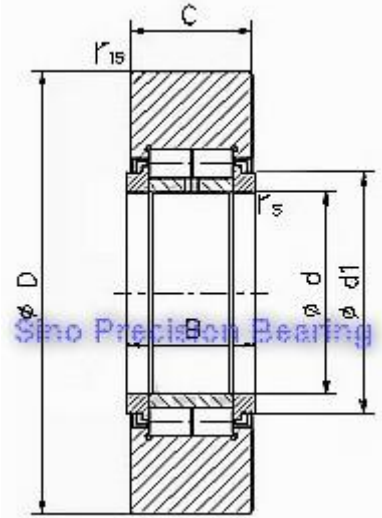
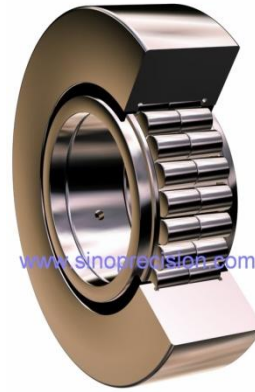


滾輪軸承-NUTR 型

NUTR Track Roller Bearings

NUTR 型支承滾輪為滿裝圓柱滾子結構，一般外徑輪廓為 R500 圓弧型，適用於承受非常重的載荷，在高速下也可承受衝擊性的軸向載荷。



技術參數

| 承型號 Designation | 外形尺寸 Dimensions (mm) | | | | | | | 額定負荷 Rated Load (KN) | | 作支承滾輪 Support wheel (KN) | | 重量 Weigh (kg) |
|--------------------|-------------------------|-----|----|----|----|-------------------|--------------------|----------------------------|------|--------------------------------|------|---------------------|
| | d | D | C | B | d1 | r _{5min} | r _{15min} | Cr | Cor | Cw | Cow | |
| NUTR15 | 15 | 35 | 18 | 19 | 20 | 0.3 | 0.6 | 23 | 27 | 15.3 | 18.7 | 0.099 |
| NUTR1542 | 15 | 42 | 18 | 19 | 20 | 0.3 | 0.6 | 24 | 30 | 18.3 | 24.3 | 0.158 |
| NUTR17 | 17 | 40 | 20 | 21 | 22 | 0.5 | 1 | 24.8 | 31 | 18.5 | 24.8 | 0.147 |
| NUTR1747 | 17 | 47 | 20 | 21 | 22 | 0.5 | 1 | 28.2 | 39.6 | 21.6 | 30.5 | 0.22 |
| NUTR20 | 20 | 47 | 24 | 25 | 27 | 0.5 | 1 | 39 | 50 | 28 | 35 | 0.245 |
| NUTR2052 | 20 | 52 | 24 | 25 | 27 | 0.5 | 1 | 44 | 61 | 32 | 44 | 0.321 |
| NUTR25 | 25 | 52 | 24 | 25 | 31 | 0.5 | 1 | 43.5 | 60 | 29 | 39.5 | 0.281 |
| NUTR2562 | 25 | 62 | 24 | 25 | 31 | 0.5 | 1 | 48 | 72 | 35.5 | 54 | 0.45 |
| NUTR30 | 30 | 62 | 28 | 29 | 38 | 0.5 | 1 | 59 | 72 | 40 | 54 | 0.465 |
| NUTR3072 | 30 | 72 | 28 | 29 | 38 | 0.5 | 1 | 69 | 98 | 48 | 70 | 0.697 |
| NUTR35 | 35 | 72 | 28 | 29 | 44 | 0.6 | 1.1 | 65 | 93 | 45 | 65 | 0.63 |
| NUTR3580 | 35 | 80 | 28 | 29 | 44 | 0.6 | 1.1 | 75 | 110 | 55 | 78 | 0.836 |
| NUTR40 | 40 | 80 | 30 | 32 | 51 | 0.6 | 1.1 | 90 | 124 | 56 | 80 | 0.816 |
| NUTR4090 | 40 | 90 | 30 | 32 | 51 | 0.6 | 1.1 | 102 | 155 | 66 | 101 | 1.129 |
| NUTR45 | 45 | 85 | 30 | 32 | 55 | 0.6 | 1.1 | 92 | 126 | 56 | 82 | 0.883 |
| NUTR45100 | 45 | 100 | 30 | 32 | 55 | 0.6 | 1.1 | 112 | 160 | 72 | 115 | 1.396 |
| NUTR50 | 50 | 90 | 30 | 32 | 60 | 0.6 | 1.1 | 100 | 125 | 57 | 81 | 0.95 |
| NUTR50110 | 50 | 110 | 30 | 32 | 60 | 0.6 | 1.1 | 115 | 165 | 76 | 121 | 1.69 |